

## Surface Technology from **HEGE**



## Hege Systems and Machine Building

The „typical Swabian“ company, Hege, is located near Reutlingen in the Swabian Alb in Baden Württemberg, the most important industrial region in the Federal Republic of Germany. Hege was founded in Pfullingen in 1983.

Today, Hege offers systems for the entire range of surface treatment - from pre-treatment to the finished painted or powder-coated product. Efficient production with the appropriate infrastructure, highly qualified employees and objective and honest advice form the basis of the company's success. Numerous reference installations and satisfied customers confirm this.

### Main Fields of Activity

- Complete painting and powder coating systems.
- Components for painting and powder coating systems such as, for example, pre-treatment systems, water treatment, waste-water treatment, blowing zones, painting cabins, powder coating cabins, dryers, exhaust air cleaning, conveyor technology and further peripheral facilities.
- Optimisation and conversion of existing systems.
- After sales service of plants.

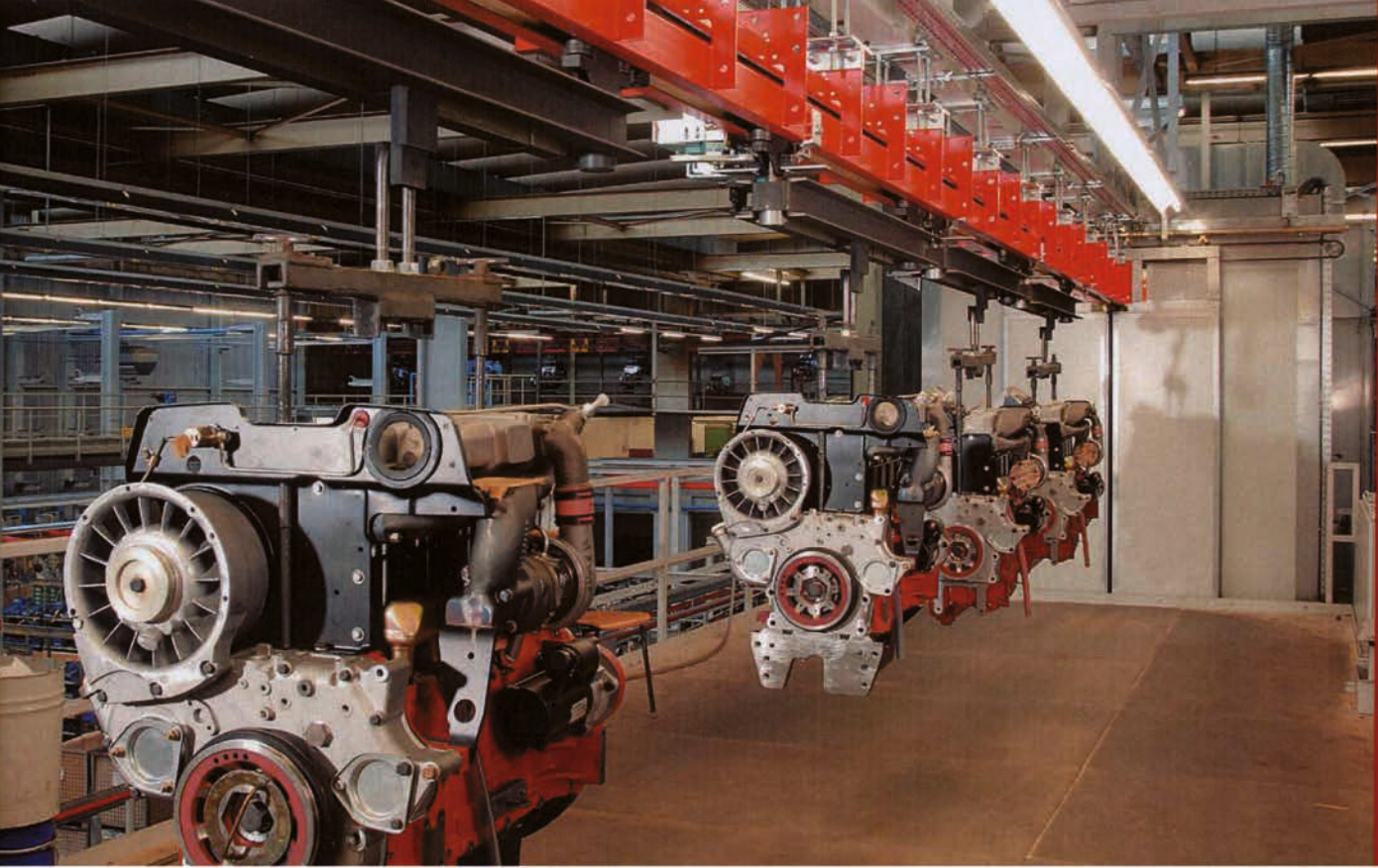
### Tailor-made Solutions: Standard or Individual

Whether systems for pre-treatment or for metal or plastic painting and powder coating, whether vortex sintering systems, penetration systems and paint stripping systems: Every product from our extensive product range is impressive due to its environmentally friendly technology.

In cooperation with leading application manufacturers, we supply advanced systems engineering technology - from individual production to complete systems perfectly matched to the requirements of the respective industrial sector. In line with this, we also purchase the appropriate conveyor systems taking into account optimal application, cost and economic matters and are always available to advise our customers.

Individual concepts, cost-saving ideas, innovative technology, the best knowledge of the materials and, last but not least, highly motivated and qualified employees are the cornerstones of our successful solutions in the fields of surface technology.

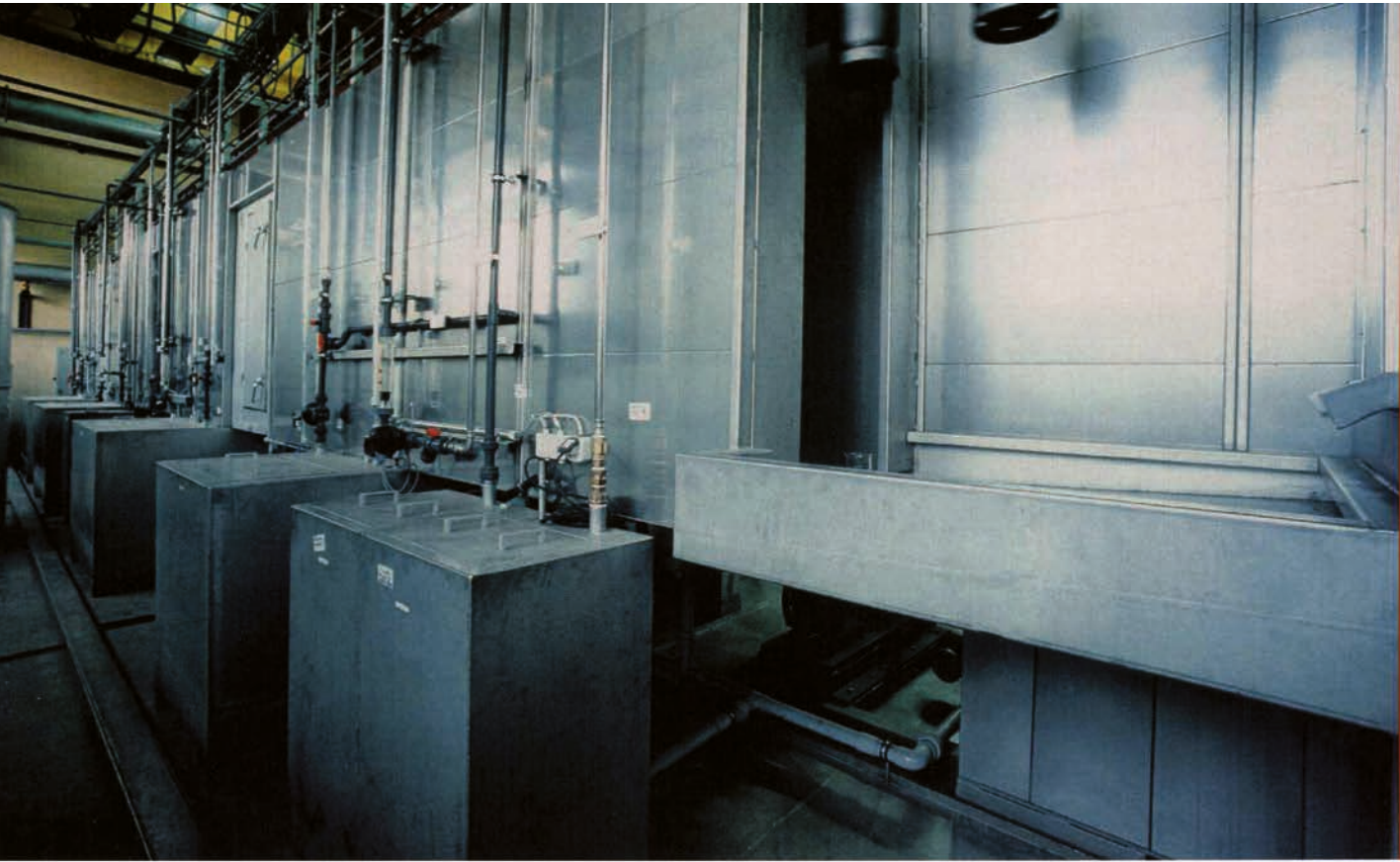




## Reference Products

- Wheel rims
- Chairs
- Tables
- Musical instruments
- Electrical cabinets
- Storage racks
- Hospital furniture and beds
- Doors
- Door fittings
- Office furniture
- Ceramic parts
- Christmas tree decorations
- Bicycles
- Gardening equipment
- Wheelbarrows
- Textile machines
- Plumbing fittings
- Motor vehicle components such as exterior mirrors and bumpers
- Television housings
- Aircraft and landing gear parts





## Pre-treatment / Cleaning

- Continuous flow pre-treatment systems
- Chamber pre-treatment systems
- Dip pre-treatment systems
- Cleaning cabins with water circulation management
- Blowing zones, retained water dryers
- Flexible, product-related designs
- Excellent pre-treatments for high-quality painting or coating

Hege coordinates the pre-treatment process individually with your requirements and with the chemical suppliers of your choice. Naturally, we will be pleased to give our recommendations for this.

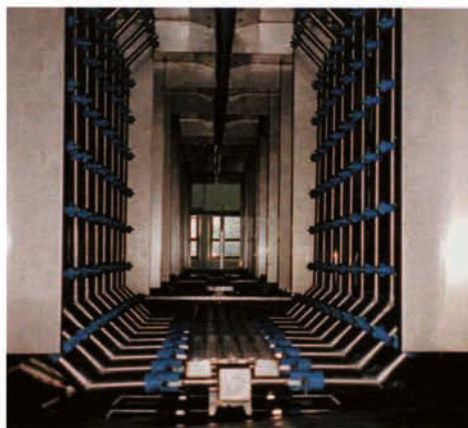
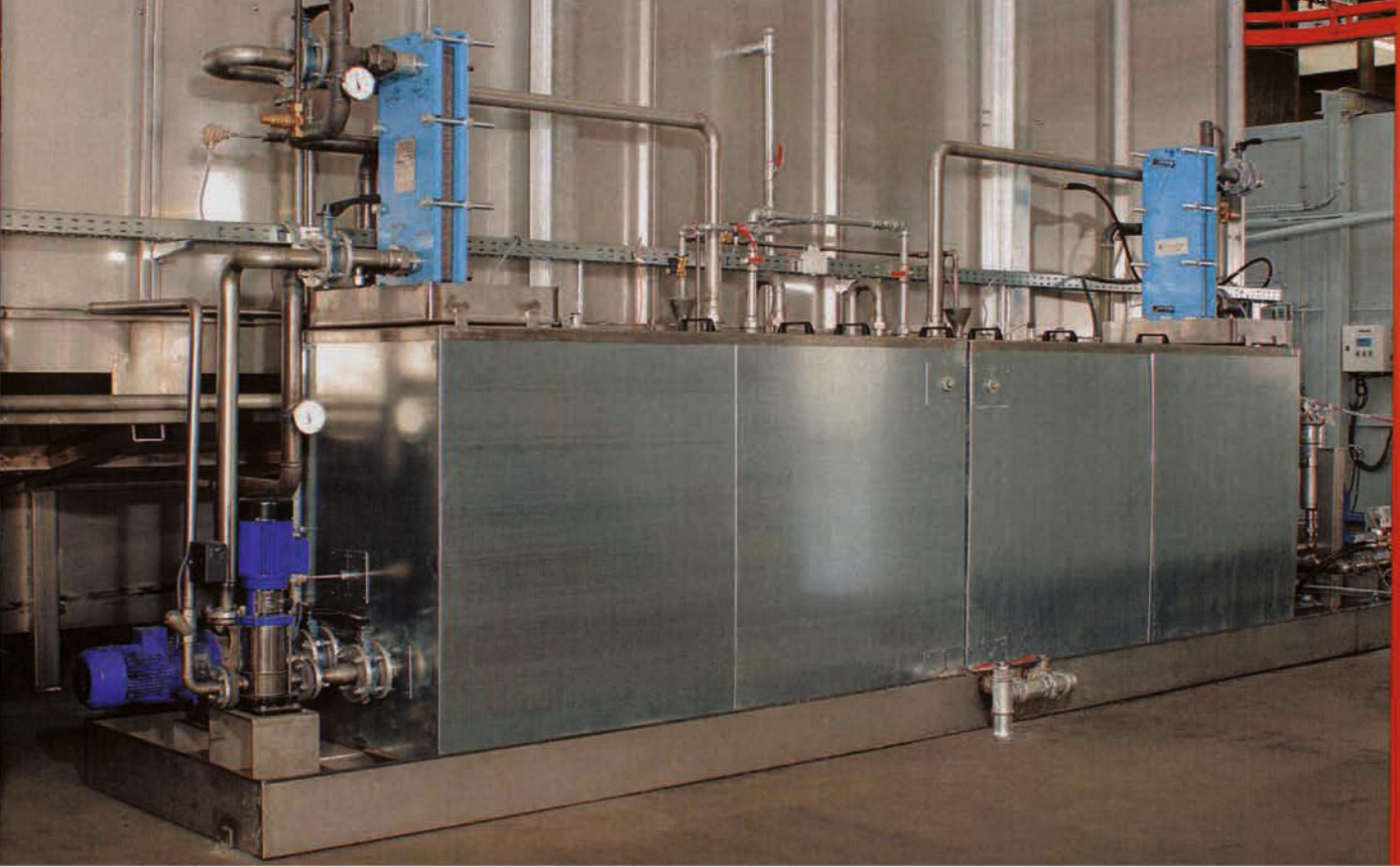
In doing so, we take into account in particular:

- Quality requirements.
- Test and inspection regulations (for example, the Water Resources Act, TA-Luft, (Technical Instruction on Air Quality Control) Safety of Machinery Act, etc.).
- Materials.
- Cost-effectiveness.
- Environmental issues.

Naturally, on the subjects of fresh water and waste-water treatment, sewage disposal and bath maintenance measures, we also have the right solution for you.







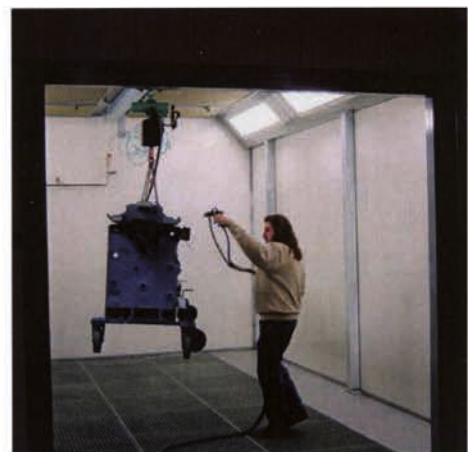


## Painting Facilities

With a high level of technical know-how, Hege designs and builds coating systems with which bulk products are pre-treated, painted and baked.

Hege painting systems offer the following advantages:

- Less environmental impact.
- High operational reliability.
- Low maintenance costs.
- Low operating costs







The Hege product range includes the following components for wet painting as standard and special systems:

- Pre-treatment cabins.
- Spray walls, stands and cabins.
- Paint sludge discharge and paint recycling.
- Flow-coat systems.
- Paint dipping baths.
- Cathodic dip-paint coating systems.
- Flash-off zones.
- Cooling zones.
- Conveyor technology.
- Exhaust air and supply air systems.
- Thermal afterburner systems.
- Fire suppression systems.

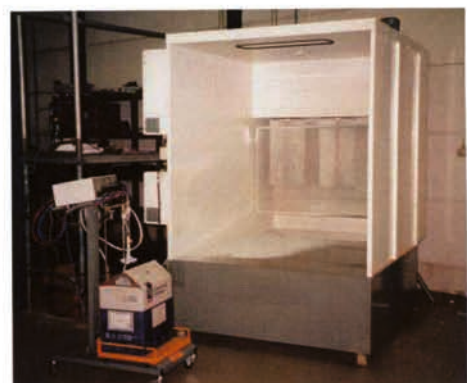




## Electrostatic Powder Coating

In most cases, the Hege concept for the coating structure is: The use of powder or paint. Powder coatings are highly resistant and are used as the primer and filler in one.

The subject of powder coating is highly topical and the aspects of environmental compatibility and economic efficiency are particularly advantageous here.









## Drying in Modern Surface Coating

Hege dryers, pre-heating and curing ovens are the decisive qualitative links in the entire surface coating chain.

To these belong:

- Retained water dryers.
- Paint dryers.
- Powder dryers.
- Special dryers.
- Annealing ovens.

Hege designs and manufactures continuous, continuous reversible, chamber and special dryers tailored to your individual needs and space requirements. In the process, different types of heating can be used, for example, fuel oil, natural gas, liquid gas, electrical, hot water, steam, thermal oil or infrared.

Hege dryers offer you and your product the highest quality and precision in temperature accuracy for all paint and powder coating applications for steel, aluminium and plastic parts, as well as for corrosion protection and decorative finishes.

### Further Advantages:

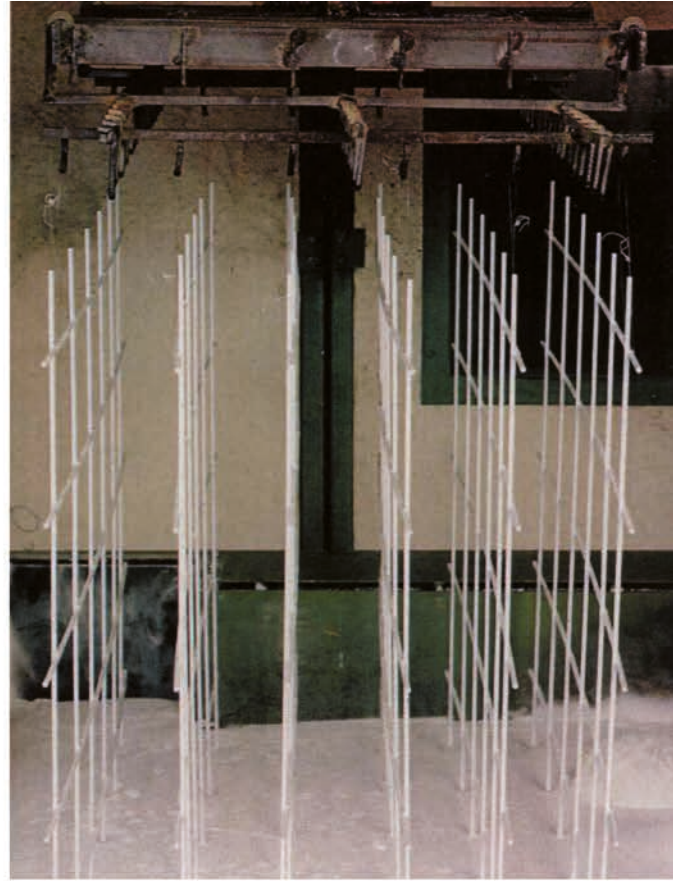
- Segmental construction with optimal insulation and low energy loss.
- The drying, curing or heating process takes place by convection or IR radiation.
- Process reliability through adapted temperature controls.
- Compliance with statutory regulations.
- If required, installation of additional components to comply with TA-Luft (Technical Instruction on Air Quality Control) or for environmental protection reasons.
- Heat recovery.





## Vortex Sintering

Always whenever especially wear- and impact-resistant surface protection is required.



## Paint Stripping Systems

When parts carriers or mis-coated parts must be stripped of paint.



## Penetration Systems

Safety is the trump card in crack detection.



**Hege GmbH Anlagen- und Maschinenbau**

Rosenstraße 28, 72805 Holzelfingen Germany  
Telephone +49 (0)71 29-4330, Telefax +49 (0)7129-21 25  
info@hege-anlagen.de  
www.hege-anlagen.com