

Examples of plant construction

- a short presentation-



HEGE GmbH plant engineering & construction

Dipl.-Ing. (FH) Rudi Greschner
graduate engineer in mechanical engineering

Just take a few minutes!

manual washing cabin

Pic 1

Manual washing is flexible and is done with visual control by the worker.



Transportation Enclosed overhead conveyor

Cleanliness The extraction takes place through the gratings under floor.

manual washing cabin

Pic 2 The pictures show the preparation of the detergent.



Thermal conditioning Heating of the bath medium using a plate heat exchanger

buffer tank Multi-chamber container with gravity pre-separator

manual washing cabin

Pic 3

Engines on the transport route



Transport

Power & Free-overhead system

Leak test basin

Pics 1+2

Teile werden in einem Tauchbecken auf Dichtheit geprüft.



Principle

Dense parts are heated in a water bath so far that leaks would have to show up by rising gas bubbles.

Bull eyes

Lateral bull eyes and lighting facilitate the leak test.

Leak test basin

Pic 3

System heating



heat exchanger Heating of the water bath by plate heat exchanger
(with suitable heat source)

alternative Alternatively, the heating can also be done electrically.

Vortex sinter plant

Fluidized bed pool

Pic 1

fluidized bed in small scale



Fluidized bed

So small can be a vortex sinter plant. The fluidization of the paint powder is carried out by a blower or compressed air

Suction

You can clearly see the suction channel at the top edge.

Vortex sinter plant

Fluidized bed pool

Pic 2-3

fluidized bed in large scale



fluidized bed
portable

Rings are vortex sintered with this large system.

Despite the total weight of the plant of several tons, it was carried out transportable even in the loaded state.

Pass through conditioning

Bild 1-3

Pass trough-conditioning in large scale



Method

Multi-chamber washing system

Zinc flake coating

Pic 1

Pass trough-system in large scale



Pass through plant Power & Free-transport system

Zinc flake coating

Pics 2-3

A glance inside



Stacking range in the oven

Paint plants for large parts

Example 1

View from outside



Aggregates

All units are overhead; the facility is easily accessible.

Ground floors

The maneuvering areas are free.

Paint plants for large parts

Example 2

View from outside



Arbeitsbühnen Seitliche Arbeitsbühnen ermöglichen schwierige Zugänge.

Flächen Die Rangierflächen sind frei.

Production belt reverser

Pics 1-3

Belt reverser for vehicle in production



Goods carrier for small parts

Teflon coating



Manual painting in the continuous process

Bilder 1+2

Rahmen in Produktion



Werkplatz

Man erkennt die horizontale Absaugwand im Hintergrund.
Der Werker braucht keine Schutzausrüstung.

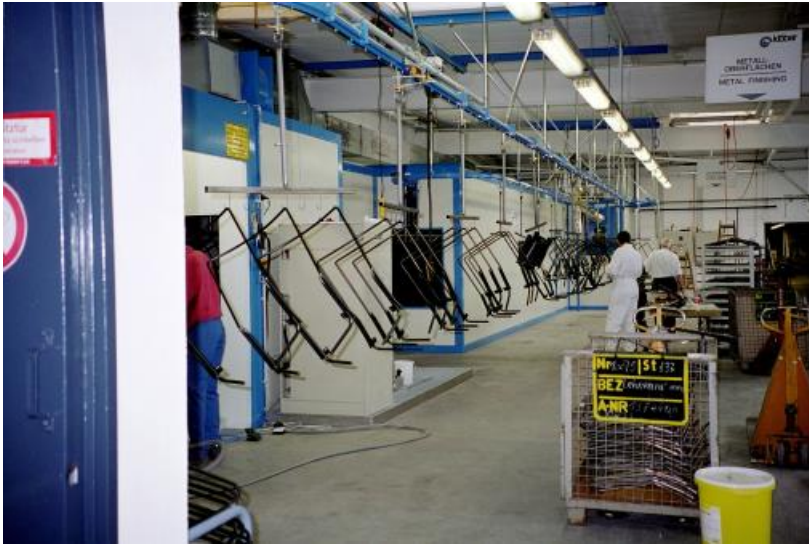
Trocknen

Das Bild zeigt den Durchlauf der Werkstücke durch die Einbrennkammer.

Manual painting in the continuous process

Pics 3+4

Rahmen in Produktion



Transport

... with open overhead conveyor

Heating up paint

The picture shows a preheating chamber for the thermal conditioning of the paint.

Camer oven 450 C°

Pics 1-3

The oven heats up to 450 C°.



**Tempering
colors**

You can already see the tempering
colors of the interior wall.

Goods carrier

Adhesive water dryer with heat pump

Pic 1

A small but already very powerful pilot plant



Heat pump

Left: Heat pump unit with a connected load of 6 kWh.

This corresponds to a water discharge of approx. 6 kg / h.

Drying cabinet

Right: Drying cabinet for storing the dry goods

Plant construction tailor-made

-conclusion

In view:

Your process

Decisive for the success of your invests is a solution that is precisely adapted to your production conditions and production targets.

Understanding of the individual process

The right solution for you results not only from the application of the respective state-of-the-art method, but also according to your specific range of parts per shift, the dimensions of the parts and the site conditions.

Business factors

We also include business considerations in our planning. The lowest price for plant manufacturing is of little use to you if the costs of operating the plant, including staff costs., run away.

We have over 30 years of experience in this business that we want to bring to your solution. We thank you for your attention. Contact us !

greschner@hege-anlagen.com